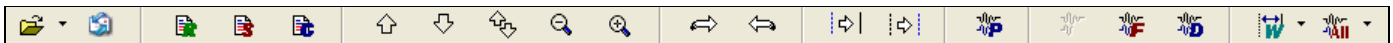


Wavewin Analysis Toolbar



Sensor Features:

- Non-Intrusive, small, clamp-on AC/DC sensor
- Sensitive down to a resolution of 10 microseconds
- Single cable for power and output
- Shielded enclosure (curved mu-metal strip)

Sensor Description:

The sensor is a small, non-intrusive, clamp-on sensor that uses a Hall Effect chip in order to sense current flow through electric wires. The current sensor has a curved mu-metal strip used for shielding against external magnetic fields and for amplifying internal fields. The sensor has a clothespin like enclosure and is capable of sensing microsecond transients (AC and DC) with a 5% accuracy range. The sensor uses a single RJ45 cable with 4 pins dedicated for both power and output signals.

Sensor Outputs:

The sensor provides a differential output of 0 +/- 2.5V with respect to an internal reference. With zero current, the output is at 0V and will go toward -2.5V when the current is negative and toward 2.5V when the current is positive. The analog output is proportional to the actual value of current flow through the wire. With the enclosure as shown in the picture, 100 milliamps of current flow produce a 6 millivolts increment on the output terminals and zero current floats under 20 millivolts. Cut off occurs around 50 amps secondary.

Sensor Specifications:

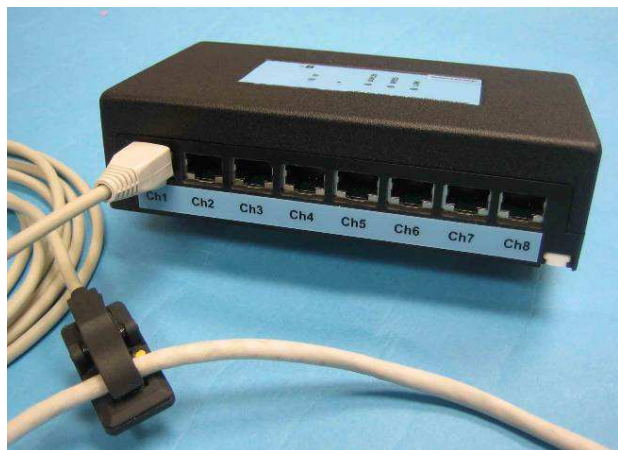
Signal Output	0 +/- 2.5 VDC
Supply Voltage	5 VDC
Supply Current	16 mAmps
Sensitivity Range:	0.05 to 50 A Secondary
Maximum Conductor	12 AWG
Response Time	10 microseconds
Bandwidth	AC/DC to 100 KHz
Dimensions (L x W x H)	1.56 x 0.78 x 0.41 inches
Accuracy	5 %
Temperature Range	-40 to 85°C
Humidity Range	0 to 90% non-condensing
Cable Length	10 ft
Cable Connector Type	RJ45 Male



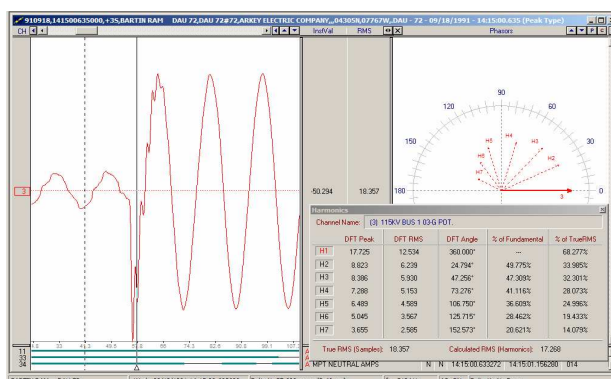
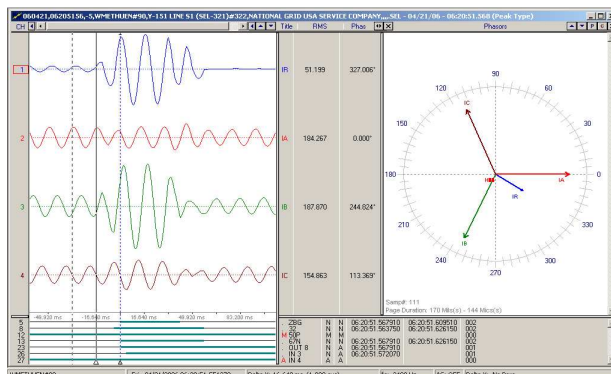
Clamp-On Current Sensor

Recorder Description:

The recorder is a small, high-speed A/D device that samples at 2340Hz per channel and transmits data continuously to a host computer over an Ethernet connection. The recorder can connect up to 8 analog sensors (current, voltage, temperature or humidity) and has the ability to start and stop data logging by analog triggering. It is also capable of simultaneous sampling and provides 8 programmable gain options.



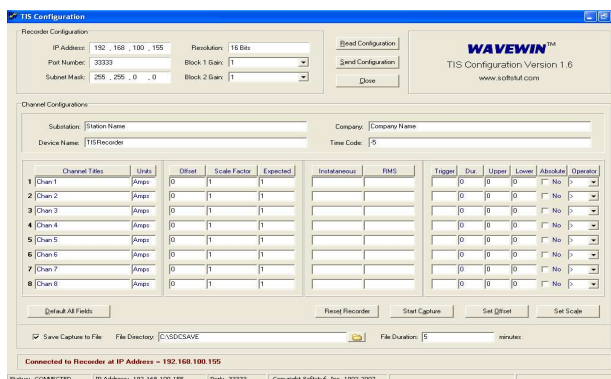
8 Channels Recorder



Wavewin Directional Harmonics Display

Recorder Specifications:

- | | |
|-------------------------|----------------------------|
| A/D Resolution | 16-Bit |
| Analog Inputs | 8 Differential |
| Sampling Rate | 2340 Hz per Channel |
| Input Range | -2.5 to 2.5 Volts |
| Current Draw | Max 250 mAmps |
| Dimensions (L x W x H) | 6.25 x 3.5 x 2.5 inches |
| Temp Range | -20 to 65°C |
| Humidity Range | 0 to 95% non-condensing |
| Ethernet Device Port | RJ45 Female |
| Analog Input Connectors | RJ45 Female |
| Power Connector | Screw Terminal, 6 position |



Configuration Software

Evaluation Kit Features:

- Small, light weight, high-speed recorder
- Equipped with 8 16-bit A/D converters
- Simultaneous sampling
- 4 Non-intrusive clamp-on current sensors
- Wavewin display & analysis software
- Wavewin configuration software
- Software and hardware manuals
- 100Base-TX Ethernet Interface
- 8 Programmable gain options
- 24V External Power Supply

Contact Us:

To purchase a Wavewin Sniffer Evaluation Kit, please contact our Sales Department @ 800-818-3463, sales@softstuf.com.

Hours: Monday through Friday, 9:00 a.m. to 6:00 p.m. EST (Visa, Master Card, American Express, and POs accepted)

Mailing Address:

SOFTSTUF, Inc.
P.O. Box 40245
Philadelphia, Pa 19106-0245
www.softstuf.com

Support:

Phone: 215-922-6880
Fax: 609-677-8736
support@softstuf.com